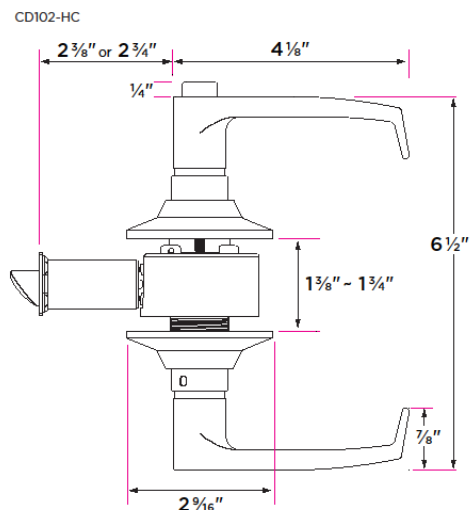
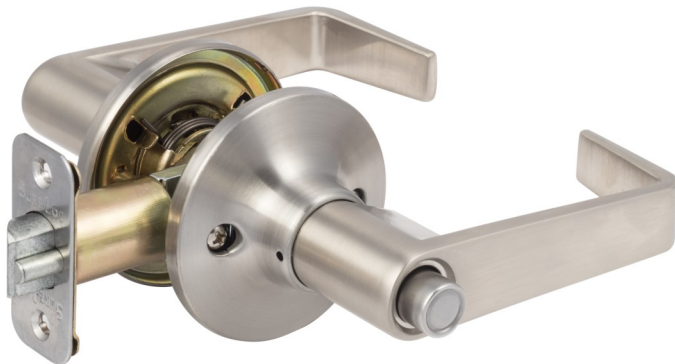


# Commercial Series

## Cedar - HC Lever grade 3, meets all ADA requirements



DESCRIPTION	PRODUCT CODE	CASE
Passage (hall/closet) Both sides always free	CD101-HC	24
Privacy (bed/bath) Locked by push button. Unlocked by inside lever or coin slot from the outside. Inside lever is always free.	CD102-HC	24
Entry- Outside lever locked by inside push button. Unlocked by key or inside lever. Inside lever is always free.	CD107-HC	12
Entry with UL latch	CD107-HC-UL	12
Dummy (closet) Inactive, single-sided, flush mount with two wood screws	CD100-HC	24

### Finishes

15 Satin Nickel

### Door Handing

Reversible Handing

### Door Thickness

1 3/8" to 1 3/4"

### Key Cylinder

5 Pin KW1

5 Pin SC1 option

### Strike Plate

2 1/4" x 1 3/4" full lip radius  
corner standard

### Latch

Tubular  
Adjustable 2 3/8"- 2 3/4"  
backset  
1/2" throw bolt  
UL option

### Door Prep

Crossbore 2 1/8"  
Edgebore 1"

### Materials

Zinc  
All metal parts