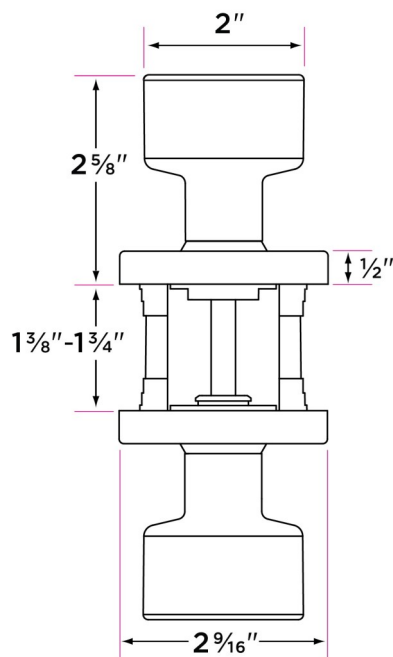


## Bergen Knob



DESCRIPTION	PRODUCT CODE	CASE
Passage (hall/closet) Both sides always free	BG101	12
Privacy (bed/bath) Locked by finger turn. Unlocked by finger turn or coin slot from the outside	BG102	12
Entry-Locked/unlocked by inside finger turn or outside key	BG107	12
Dummy (closet) Inactive, single-sided, flush mount with two wood screws	BG100	12
Handleset Interior Trim	BG100-H	12

### Finishes

32D Stainless Steel  
26 Polished Chrome  
11P Vintage Bronze  
FBL Flat Black

### Door Handing

Non-handed

### Door Thickness

1 <sup>3</sup>/<sub>8</sub>" to 1 <sup>3</sup>/<sub>4</sub>"

### Key Cylinder

5 Pin KW1  
5 Pin SC1 option

### Strike Plate

2 <sup>1</sup>/<sub>4</sub>" x 1 <sup>3</sup>/<sub>4</sub>" full-lip radius corner standard

### Latch

2 <sup>1</sup>/<sub>4</sub>" x 1" radius corner faceplate  
4 in 1 latch with collar for drive-in function  
Adjustable 2 <sup>3</sup>/<sub>8</sub>" or 2 <sup>3</sup>/<sub>4</sub>"  
<sup>1</sup>/<sub>2</sub>" throw bolt

### Door Prep

Crossbore 2 <sup>1</sup>/<sub>8</sub>"  
Edgebore 1"

### Materials

Formed Brass  
All metal components