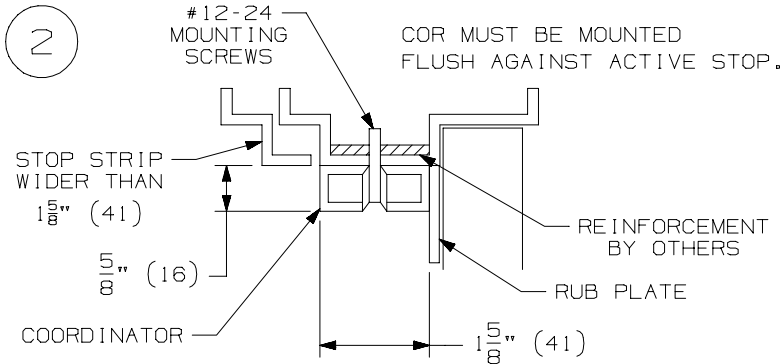
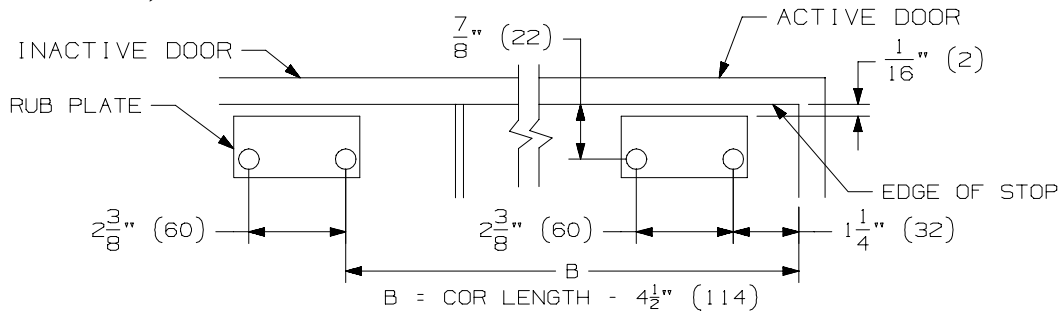
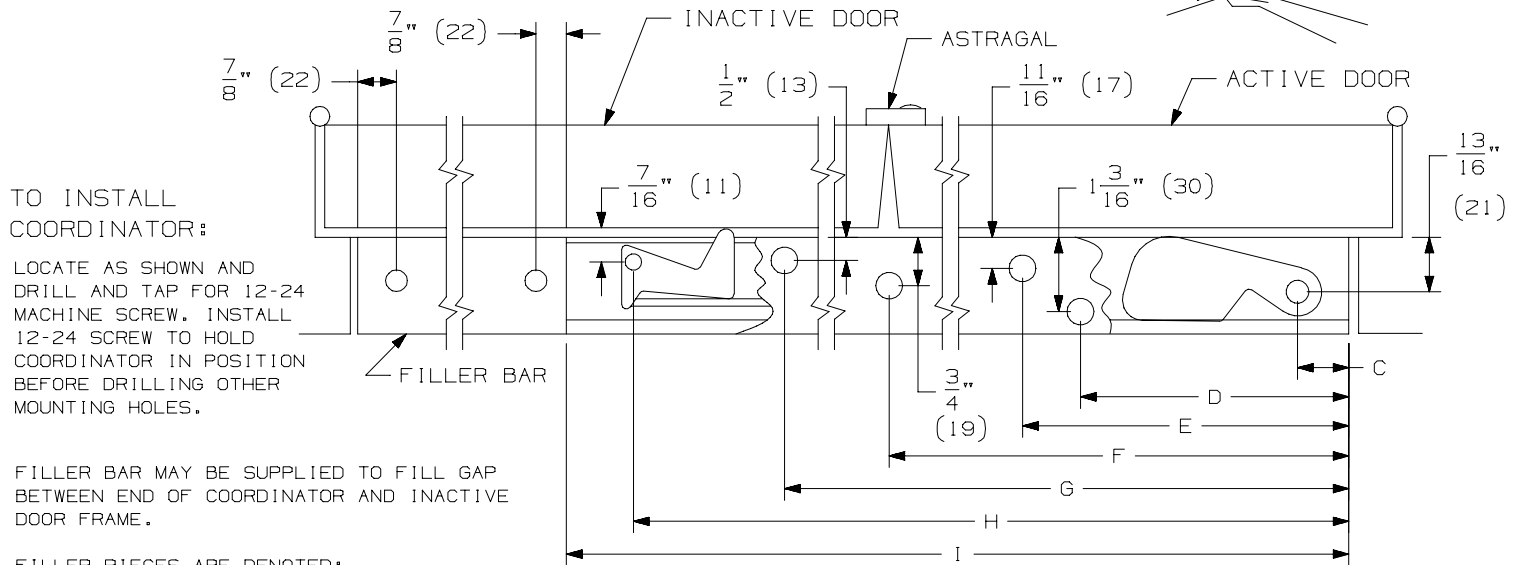
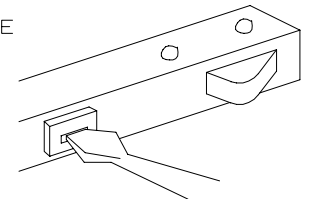


NOTE:
 INSTALL COORDINATOR BEFORE ANY OTHER HARDWARE EXCEPT HINGES AND DOORS. FRAMES MUST BE ADEQUATELY REINFORCED.

1 WITH DOORS CLOSED, LOCATE RUB PLATE AS SHOWN.



3 HOLD OPEN ADJUSTMENT
NOTE: THE FACTORY ADJUSTMENT OF THIS UNIT IS INTENDED FOR NORMAL INSTALLATIONS. A STRONGER ADJUSTMENT COULD RESULT IN DAMAGE TO FRAME AND HINGES. TO INCREASE OVER RIDE TENSION OF ACTIVE DOOR LEVER, TURN ADJUSTMENT NUT COUNTERCLOCKWISE WITH A LARGE SCREWDRIVER.



TO INSTALL FILLER BAR, CUT FILLER BAR TO LENGTH NEEDED. DRILL ϕ 25/64" (10) HOLES IN FILLER BAR AT LOCATIONS INDICATED. PLACE BUSHINGS IN THESE HOLES. DRILL AND TAP MOUNTING HOLES FOR 12-24 MACHINE SCREW. INSTALL 12-24 MACHINE SCREW THROUGH BUSHINGS. THE BUSHING WILL PREVENT THE FILLER BAR FROM COLLAPSING.

LENGTH OF CHANNEL (I)	DIMENSIONS					
	C	D	E	F	G	H
32"	$\frac{7}{8}$ " (22)	$4\frac{7}{8}$ " (124)	$11\frac{13}{32}$ " (290)	OMIT	28" (791)	$31\frac{1}{8}$ " (791)
42"	$\frac{7}{8}$ " (22)	$4\frac{7}{8}$ " (124)	$11\frac{13}{32}$ " (290)	$27\frac{5}{8}$ " (702)	38" (965)	$41\frac{1}{8}$ " (1044)
52"	$\frac{7}{8}$ " (22)	$4\frac{7}{8}$ " (124)	$11\frac{13}{32}$ " (290)	$27\frac{5}{8}$ " (702)	48" (1219)	$51\frac{1}{8}$ " (1299)
60"	$\frac{7}{8}$ " (22)	$4\frac{7}{8}$ " (124)	$11\frac{13}{32}$ " (290)	$27\frac{5}{8}$ " (702)	56" (1422)	$59\frac{1}{8}$ " (1502)
72"	$\frac{7}{8}$ " (22)	$4\frac{7}{8}$ " (124)	$11\frac{13}{32}$ " (290)	$27\frac{5}{8}$ " (702)	68" (1727)	$71\frac{1}{8}$ " (1807)

IVES COR32, COR42, COR52, COR60 & COR72 COORDINATOR, CB1 CARRY BAR, MB1 & MB2 MOUNTING BRACKETS



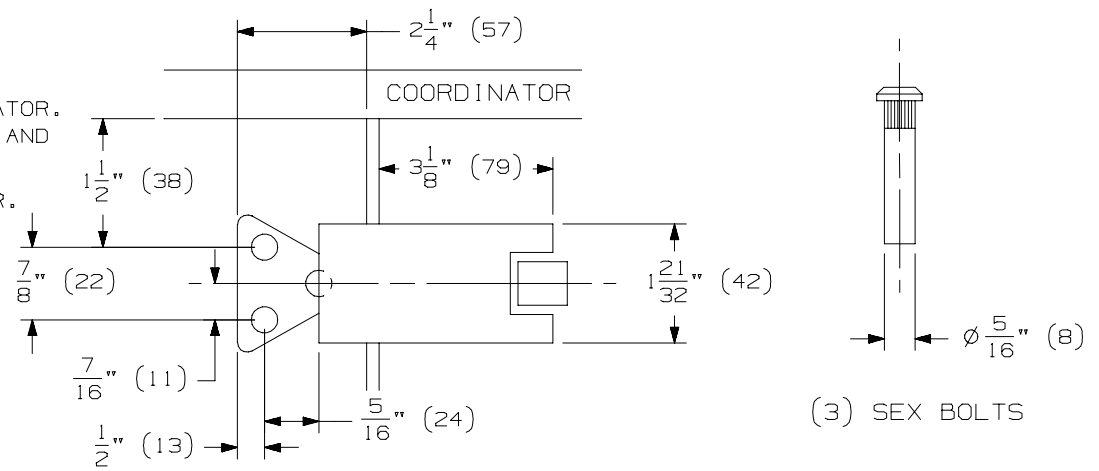
NOTE: DIMENSIONS IN () ARE MILLIMETERS.

TEMPLATE NUMBER: INST.COR-SHT1-1

DATE: 12-10-02

4 CB1

CB1 CARRY BAR MAY BE SUPPLIED WITH COORDINATOR. LOCATE HOLES AS SHOWN AND DRILL $\phi \frac{5}{16}$ " FOR SEX BOLTS ON INACTIVE DOOR.



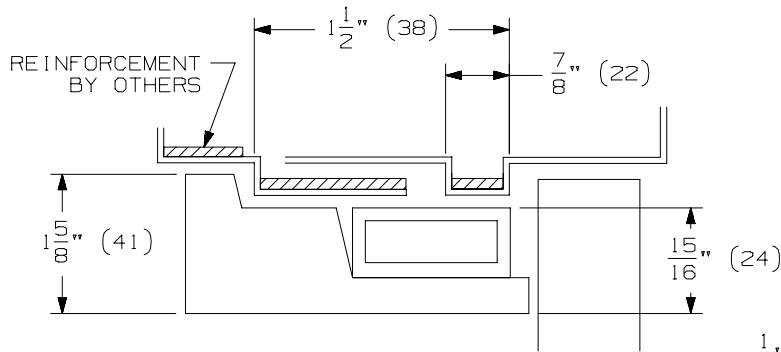
(3) SEX BOLTS

5

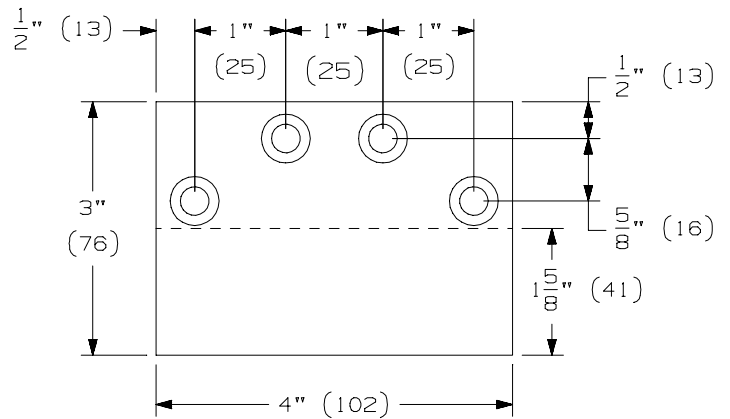
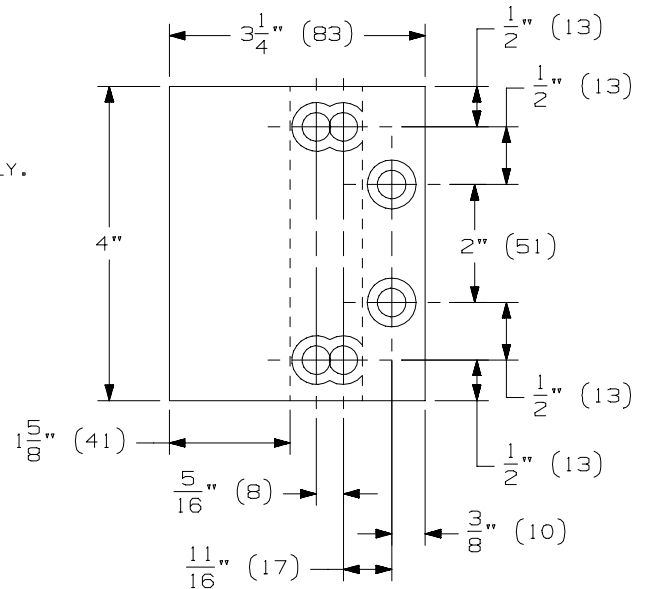
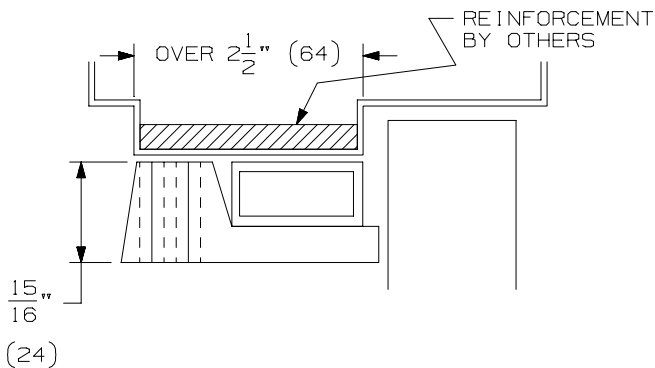
MOUNTING BRACKETS FOR STOP APPLIED HARDWARE MAY BE SUPPLIED WITH COORDINATOR. BRACKETS MUST BE FIELD PREPARED FOR STOP APPLIED HARDWARE. LOWER MOUNTING HOLES FOR DOOR APPLIED HARDWARE $\frac{1}{16}$ " TO CLEAR COORDINATOR AND MOUNTING BRACKET.

NOTE: DO NOT DRILL HOLES IN THE COORDINATOR. THIS WILL CAUSE DAMAGE TO THE UNIT AND THE COORDINATOR WILL FUNCTION CORRECTLY.

MB2 MOUNTING BRACKET FOR STRIP WIDTH UP TO $2\frac{1}{2}$ "



MB1 MOUNTING BRACKET FOR STOP STRIP WIDTHS OVER $2\frac{1}{2}$ " (64)



	QTY	SCREW DETAILS
COORDINATOR	6	12-24 X 1 1/4" TRPHMS
FILLER BAR	2	BUSHINGS
RUB PLATE	4	8 X 3/4" FPHSMS
CARRY BAR	3	12-24 X 1 1/4" TRPHMS
	3	$\phi \frac{5}{16}$ " SEX BOLT
MB1 OR MB2	4	12-24 X 1 1/4" TRPHMS

NOTE: FOR MB1F, MB2F, MB3F, MB1V, MB2V OR MB3V, SEE SEPARATE INSTRUCTIONS.

IVES COR32, COR42, COR52, COR60 & COR72 COORDINATOR, CB1 CARRY BAR, MB1 & MB2 MOUNTING BRACKETS



NOTE: DIMENSIONS IN () ARE MILLIMETERS.

TEMPLATE INST. COR-SHT2-1
NUMBER:

DATE:
12-10-02