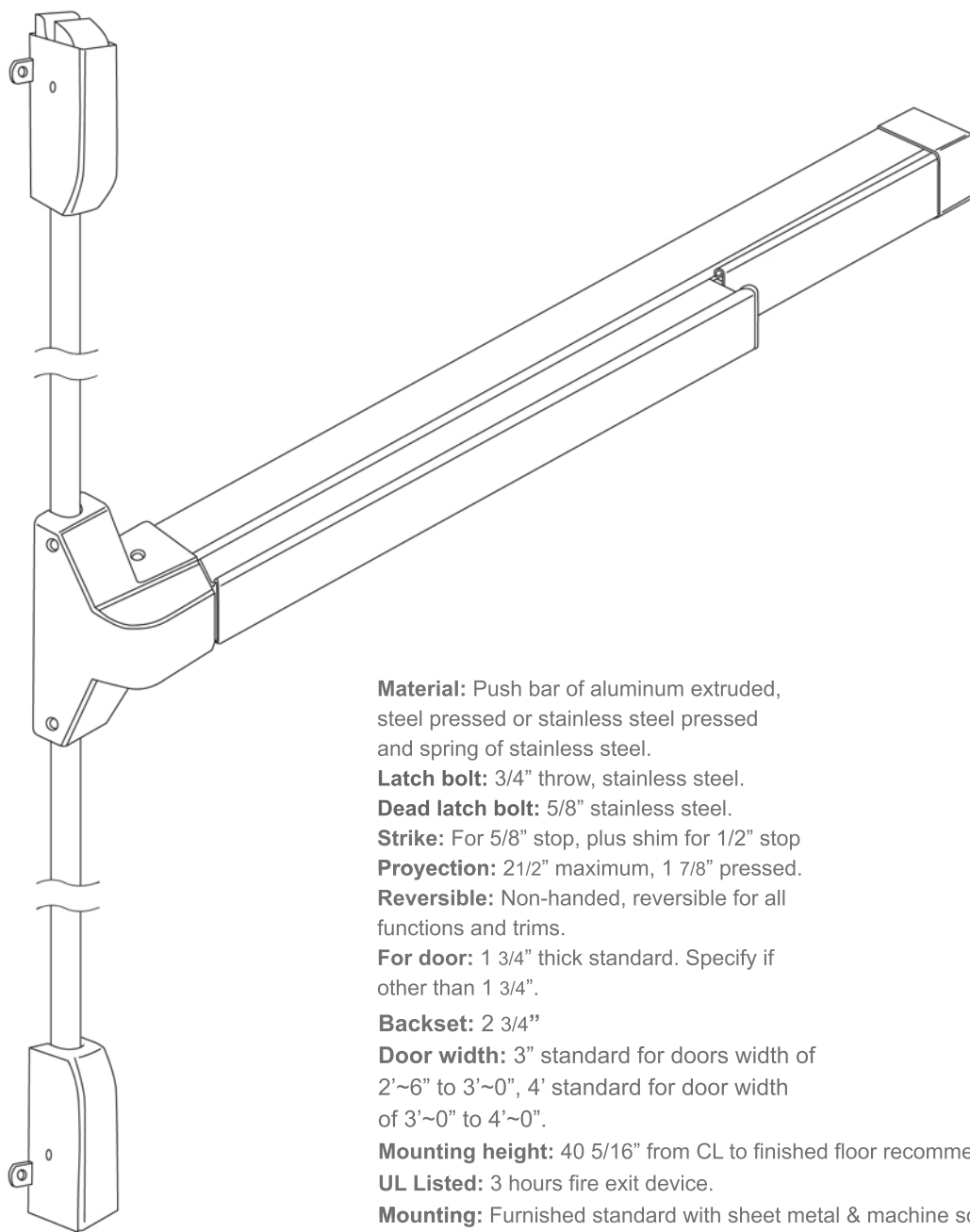


# PDVR36UL

## FIRE RATED EXIT DEVICE



**Material:** Push bar of aluminum extruded, steel pressed or stainless steel pressed and spring of stainless steel.

**Latch bolt:** 3/4" throw, stainless steel.

**Dead latch bolt:** 5/8" stainless steel.

**Strike:** For 5/8" stop, plus shim for 1/2" stop

**Projection:** 2 1/2" maximum, 1 7/8" pressed.

**Reversible:** Non-handed, reversible for all functions and trims.

**For door:** 1 3/4" thick standard. Specify if other than 1 3/4".

**Backset:** 2 3/4"

**Door width:** 3" standard for doors width of 2'-6" to 3'-0", 4' standard for door width of 3'-0" to 4'-0".

**Mounting height:** 40 5/16" from CL to finished floor recommended.

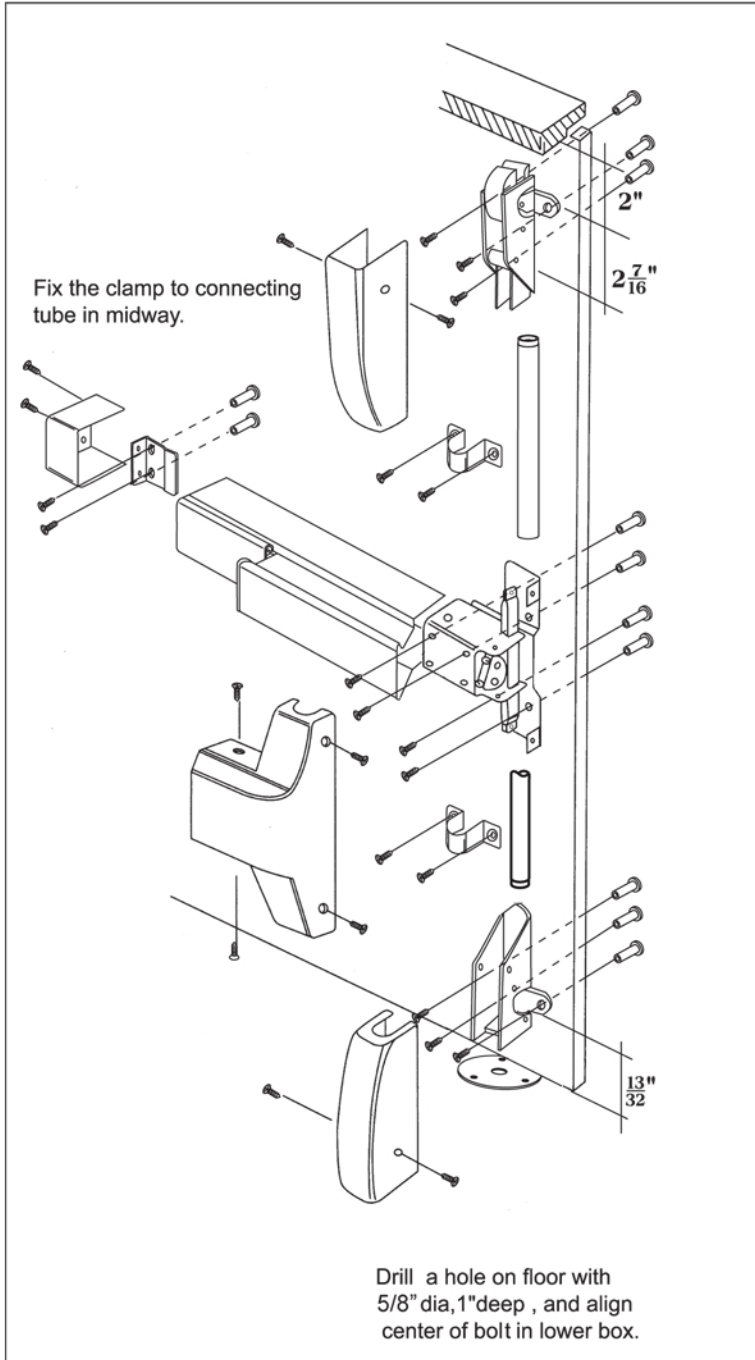
**UL Listed:** 3 hours fire exit device.

**Mounting:** Furnished standard with sheet metal & machine screws or SNB as option.

**Cylinders:** For trim, knob, lever & thumb-press type, Schlage C" key way.

**Operation:** Inside by slight pressure on any point on the push bar at all time.

**Models:** Rim tipe & vertical rod available.



**STEP 1: MARK CENTER LINE ON DOOR**

Mark center line on inside of door. Establish the horizontal center line of the device by drawing a line across the door 40" above floor line.

**STEP 2: MARK DOOR AND DRILL HOLES**

1. Fold and apply template (A) to edge of door and mark door as indicated on template (A).
2. Drill holes Ax6 in accordance with the diameters as indicated on template (A).

**STEP 3: INSTALL DEVICE BODY**

1. Loosen screws and remove head cover and end cover.
2. Align holes of head with the holes on the door and tighten screws.

**STEP 4: INSTALL TOP STRIKE**

1. Align vertical center line of Top Strike and upper connecting tube as shown on template (B). Mark door as indicated on template (B).
2. Tighten screws to install Top Strike with proper adjustment

**STEP 5: INSTALL TOP LATCH UNIT**

1. Align vertical center line of top latch unit and upper connecting tube as shown on template (B). Mark door as indicated on template (B).

**CAUTION: BE SURE THE DISTANCE FROM DOOR FRAME TO LINE**

**W MUST BE 2\***

2. Tighten screws to install top latch unit.

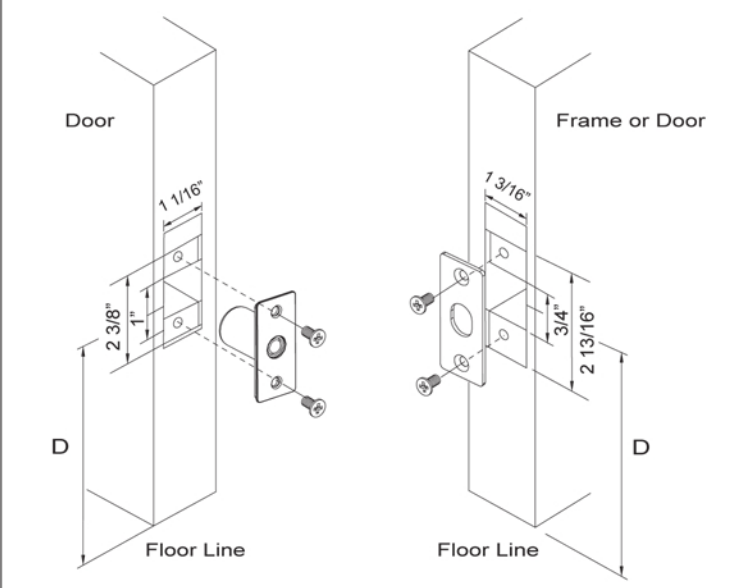
**STEP 6: DIRECTIONS FOR CHANGING HANDING OF DEVICE**

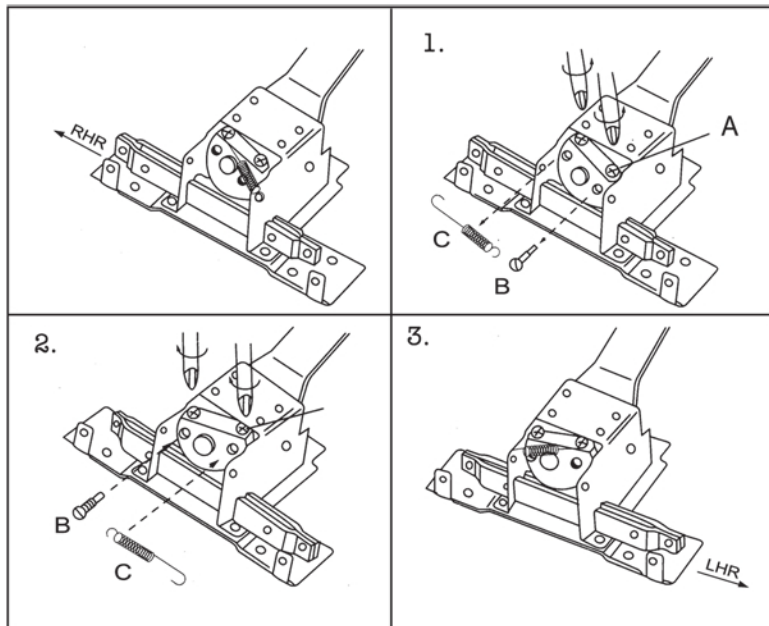
Handing of device is preset at factory for RHR. To change handing of device, follow steps shown below.

1. Loosen screws 'A' and remove screw 'B' and spring 'C'.
2. Reverse the positions of screw 'B' and spring 'C' and then tighten screw 'A'.
3. The device is now set for LHR.

**INSTALLATION FOR SPRING BOLT & STRIKE PLATE**

Note : 1. If the door height below 87" the distance D is 44" from the floor.  
 2. If the door height below 87" the distance D is half of the floor height.



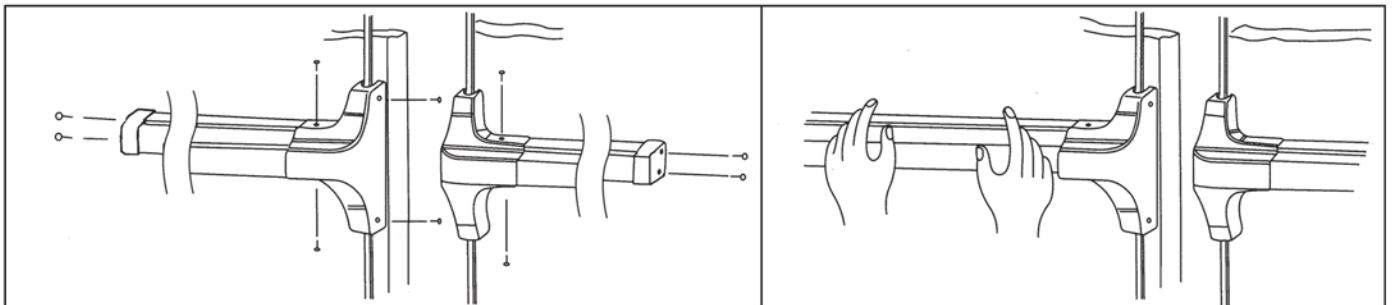


## STEP 7: INSTALL BOTTOM LATCH UNIT

1. Align vertical center line of bottom latch unit and lower connecting tube as shown on template Mark door as indicated on template (B).

CAUTION: BE SURE THE DISTANCE FROM THE BOTTOM SIDE DOOR TO THE BOTTOM OF LATCH IS  $13/32$ ".

2. Tighten screws to install bottom latch unit.



## STEP 8: INSTALL AND ADJUST UPPER CONNECTING TUBE

1. Keep the end of the tube with the threaded insert upward to connect it with the threaded bolt in the top latch unit.
2. Connect the other end of the tube to the internal mechanism of the head assembly by inserting the connecting pin into the holes.
3. Turn and adjust upper connecting tube until top latch unit retracts properly and then insert the fixed pin.

## STEP 9: INSTALL AND ADJUST LOWER CONNECTING TUBE

1. Keep the end of the tube with the threaded insert downward to connect it with the threaded bolt in the bottom latch unit.
2. Connect the other end of the tube to the internal mechanism of the head assembly by inserting the connecting pin into the holes.
3. Connect bolt lower box with lower connecting tube.  
Then, depress push bar to check for proper retraction.  
Do not let bolt in lower touch floor while depressing push bar.

- ## STEP 10:
1. Let the bolt in lower box touch floor and mark on floor.
  2. Drill a  $5/8$ " dia, 1" deep hole and Strew Floor Strike to the floor.

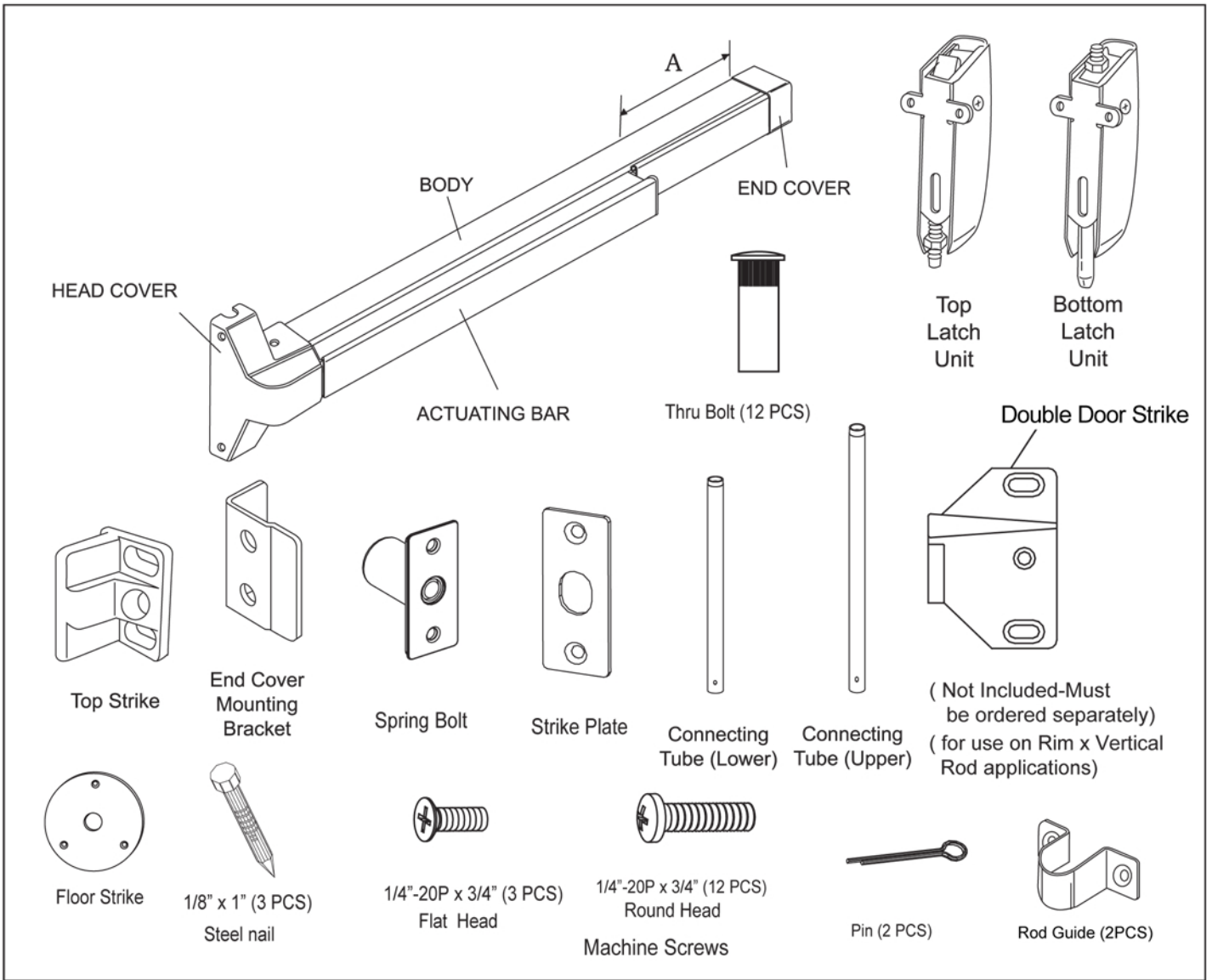
## STEP 11: TEST PUSH BAR AND DOGGING OPERATIONS:

1. The top latch unit should engage the Top Strike and the bottom latch unit should engage the floor Strike when the door is closed. If the door can be pushed open without depressing the push bar, the upper connecting tube has been over adjusted. Adjust it as needed.
2. The top and bottom latch units should disengage from the strike freely when the push bar is depressed or dogged down. If they do not disengage, adjust the upper connectors as needed and retest for proper operation.

## STEP 12: INSTALL TWO ROD GUIDES:

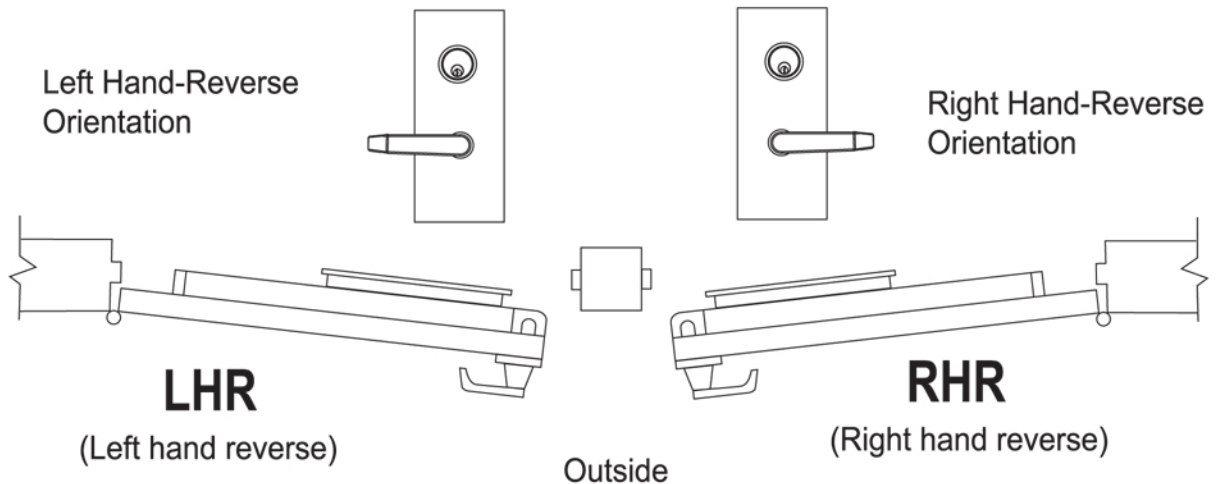
1. Take the approximately middle of upper and lower connecting tube.
2. Tighten screws to install rod guides.

# PARTS IDENTIFICATION



# DOOR HANDING

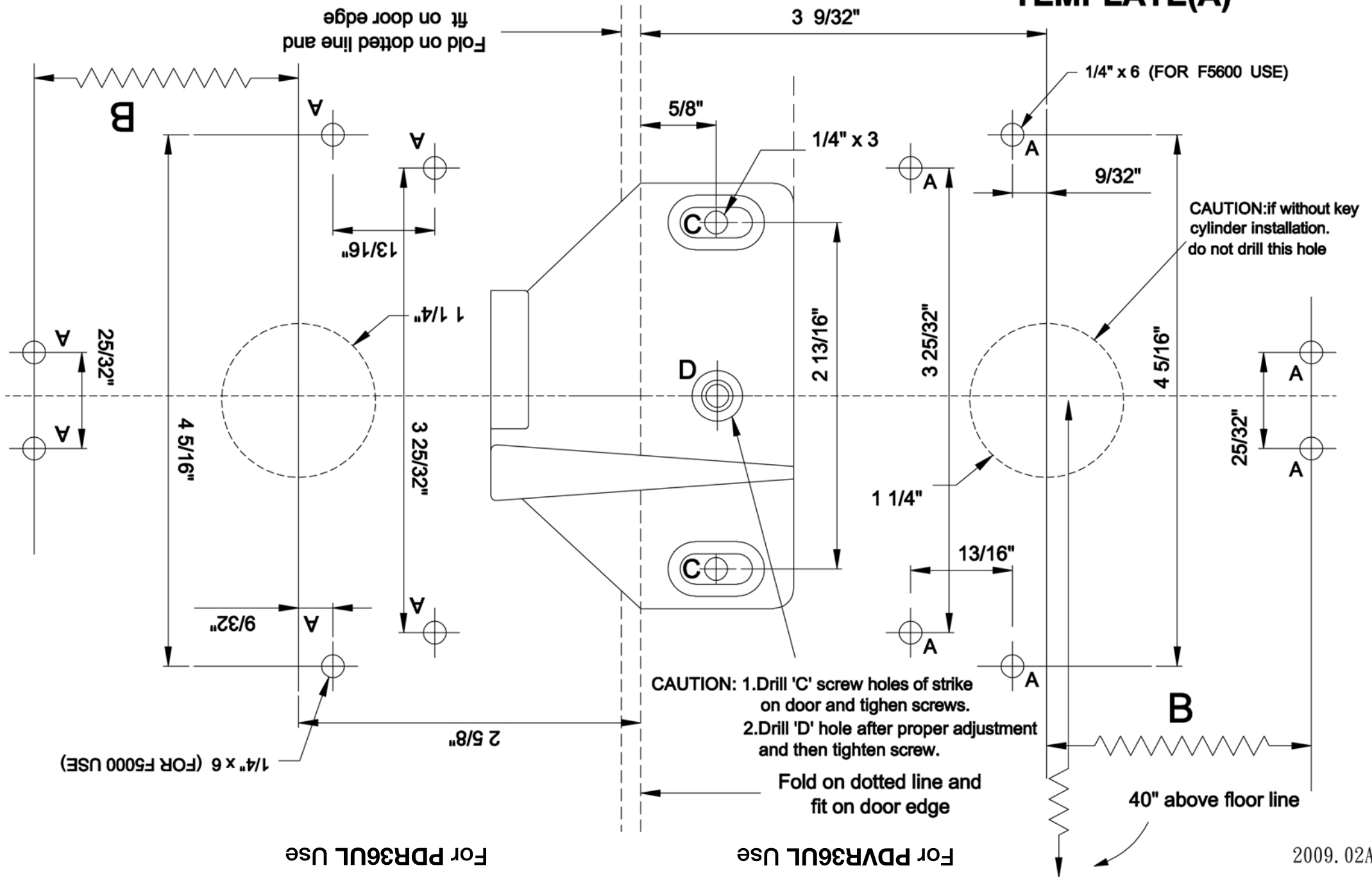
Note: If door is LHR , please refer to step 6



For PDR36UL Use

For PDVR36UL Use

# TEMPLATE(A)



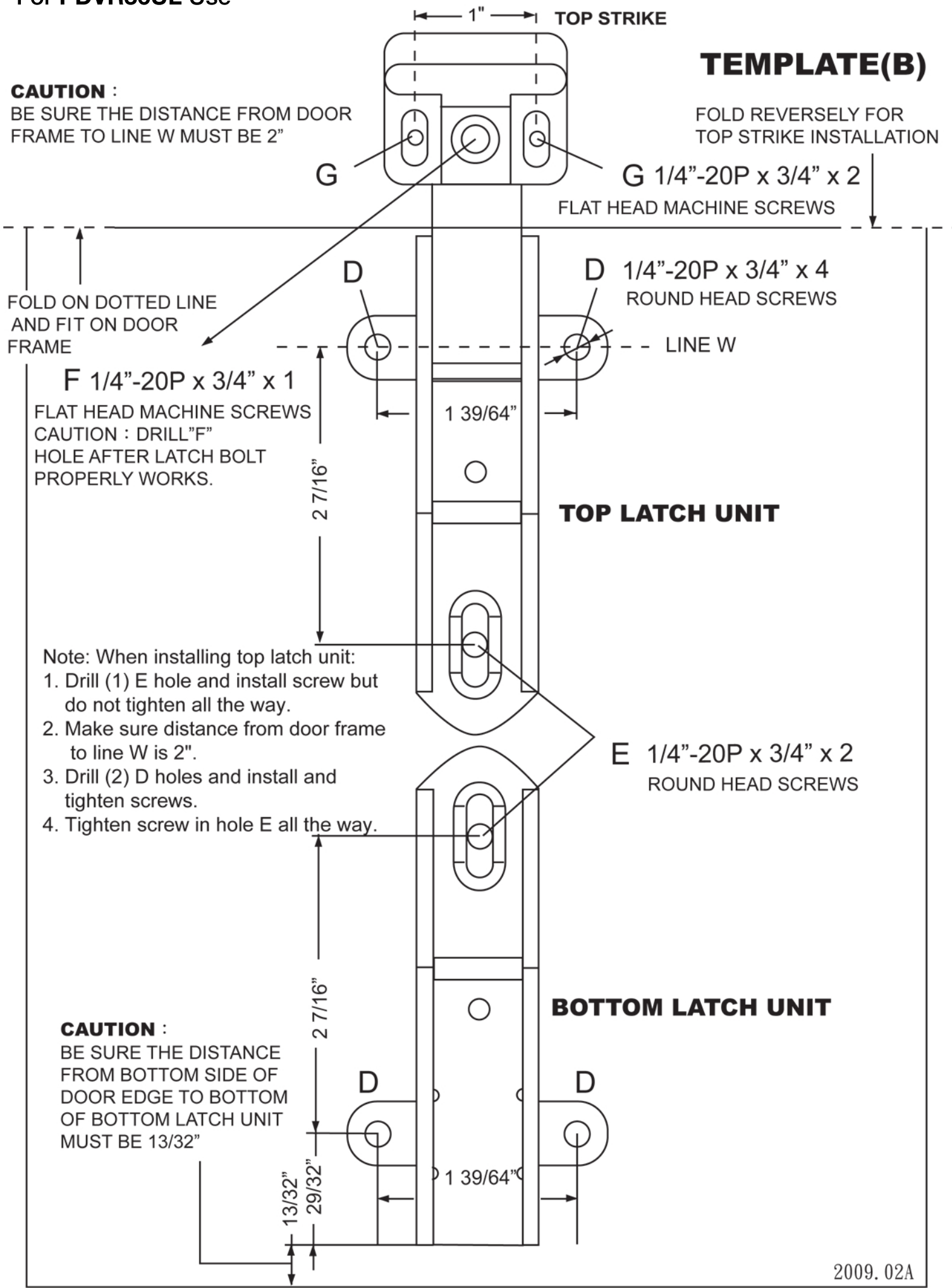
For PDVR36UL Use

**TEMPLATE(B)**

**CAUTION :**

BE SURE THE DISTANCE FROM DOOR FRAME TO LINE W MUST BE 2"

FOLD REVERSELY FOR TOP STRIKE INSTALLATION



FOLD ON DOTTED LINE AND FIT ON DOOR FRAME

**F** 1/4"-20P x 3/4" x 1  
FLAT HEAD MACHINE SCREWS  
CAUTION : DRILL "F"  
HOLE AFTER LATCH BOLT  
PROPERLY WORKS.

- Note: When installing top latch unit:
1. Drill (1) E hole and install screw but do not tighten all the way.
  2. Make sure distance from door frame to line W is 2".
  3. Drill (2) D holes and install and tighten screws.
  4. Tighten screw in hole E all the way.

**CAUTION :**  
BE SURE THE DISTANCE FROM BOTTOM SIDE OF DOOR EDGE TO BOTTOM OF BOTTOM LATCH UNIT MUST BE 13/32"