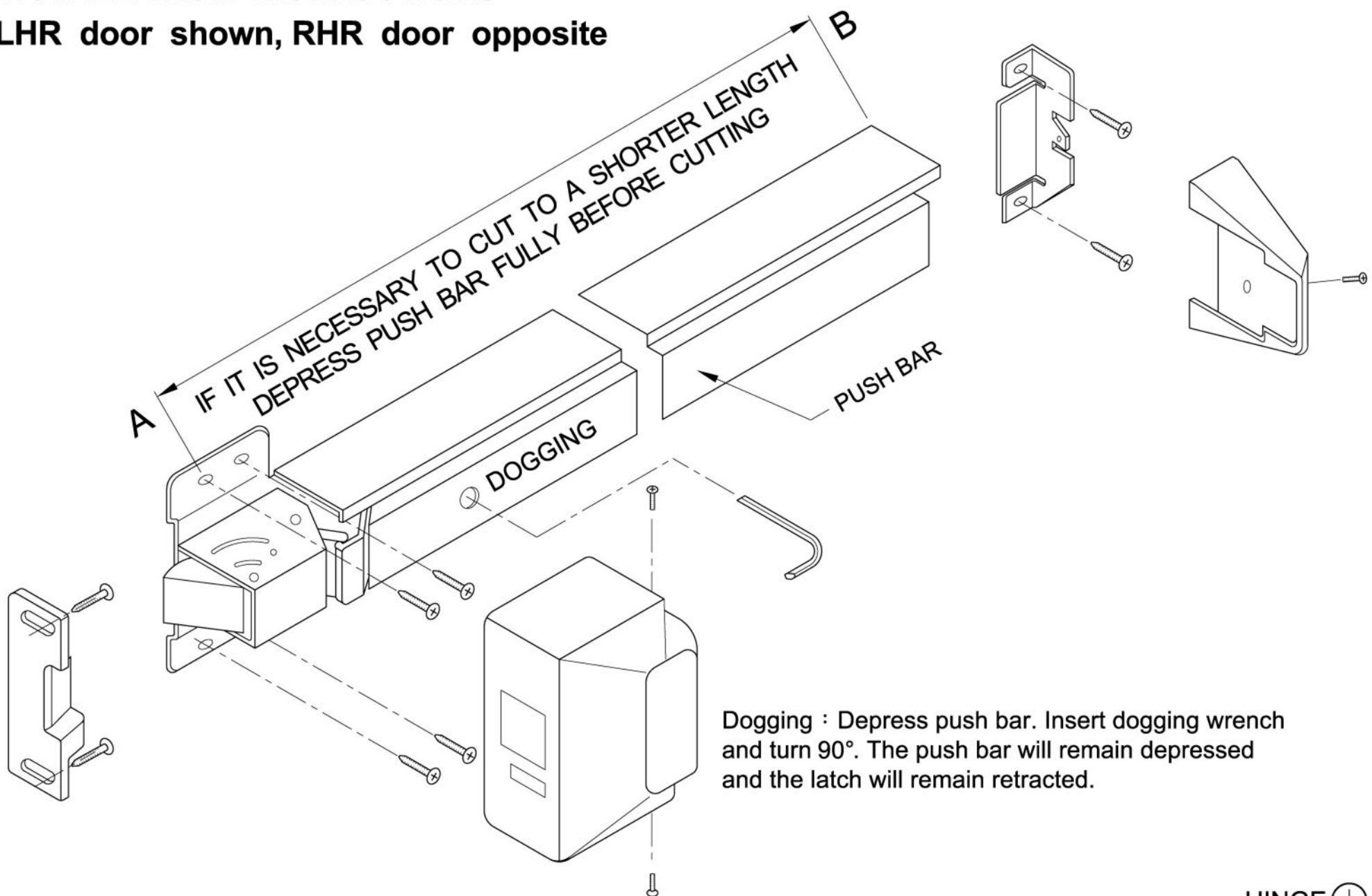
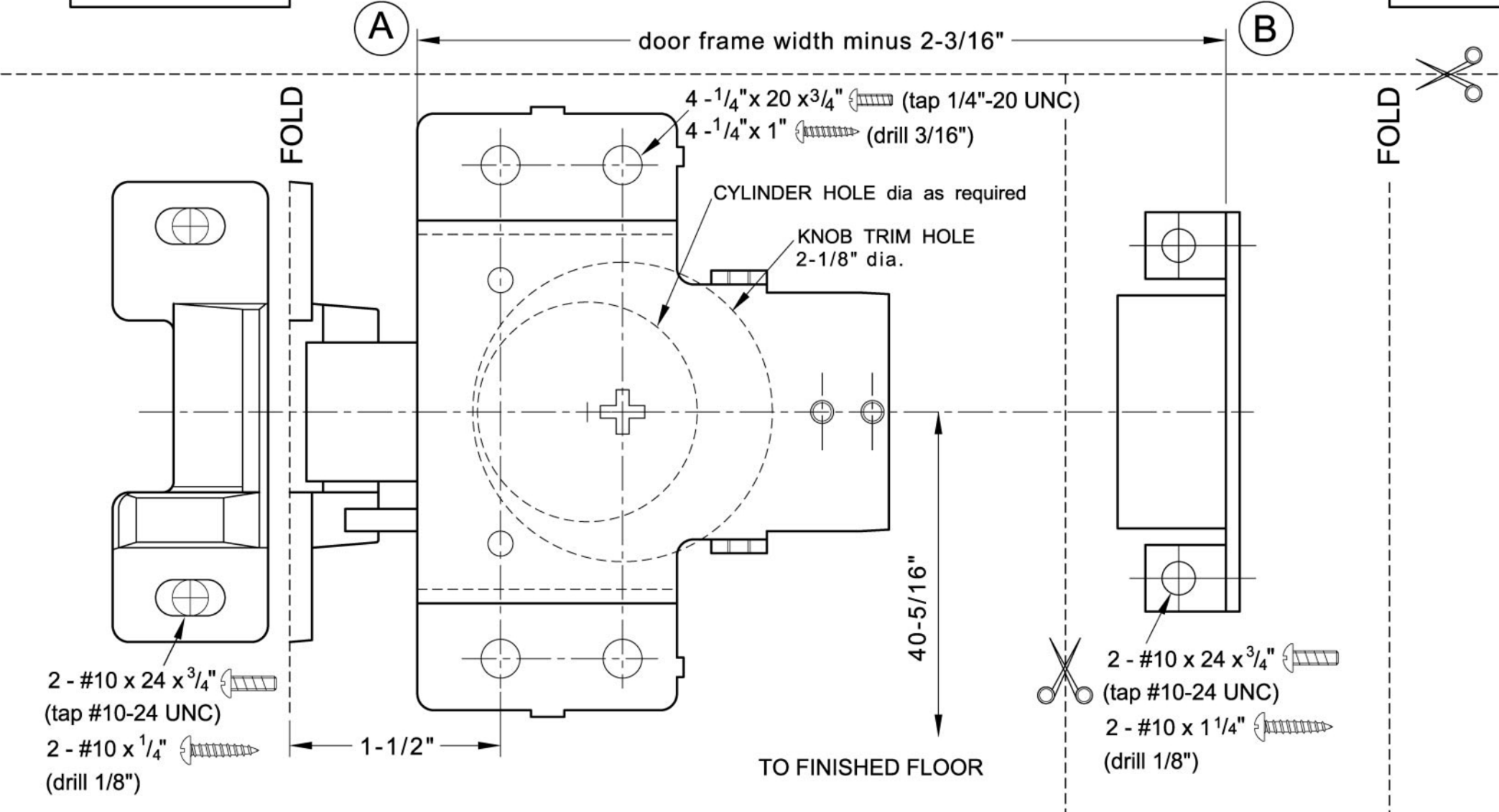
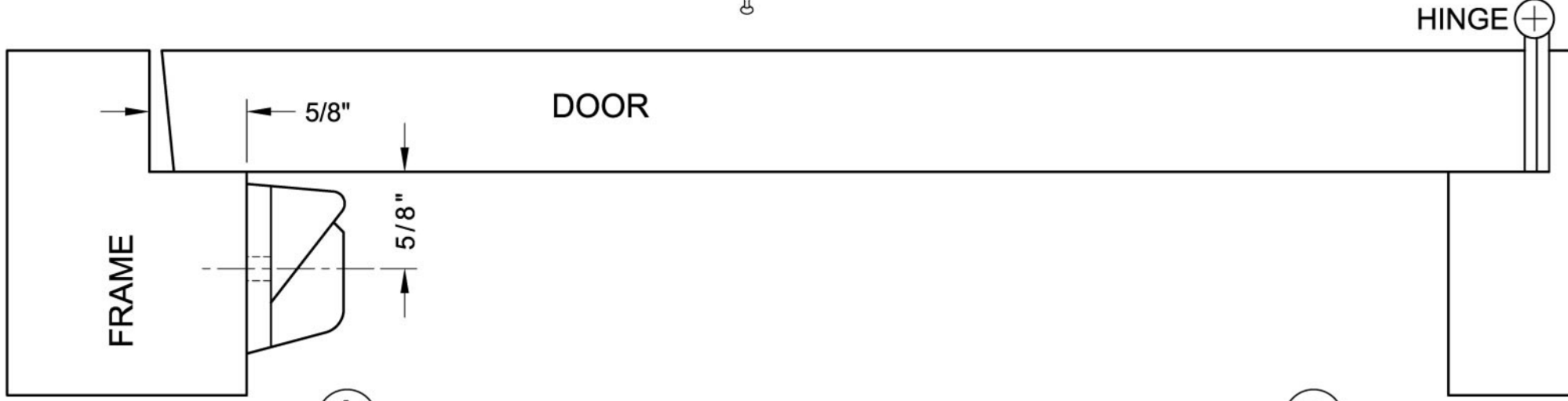


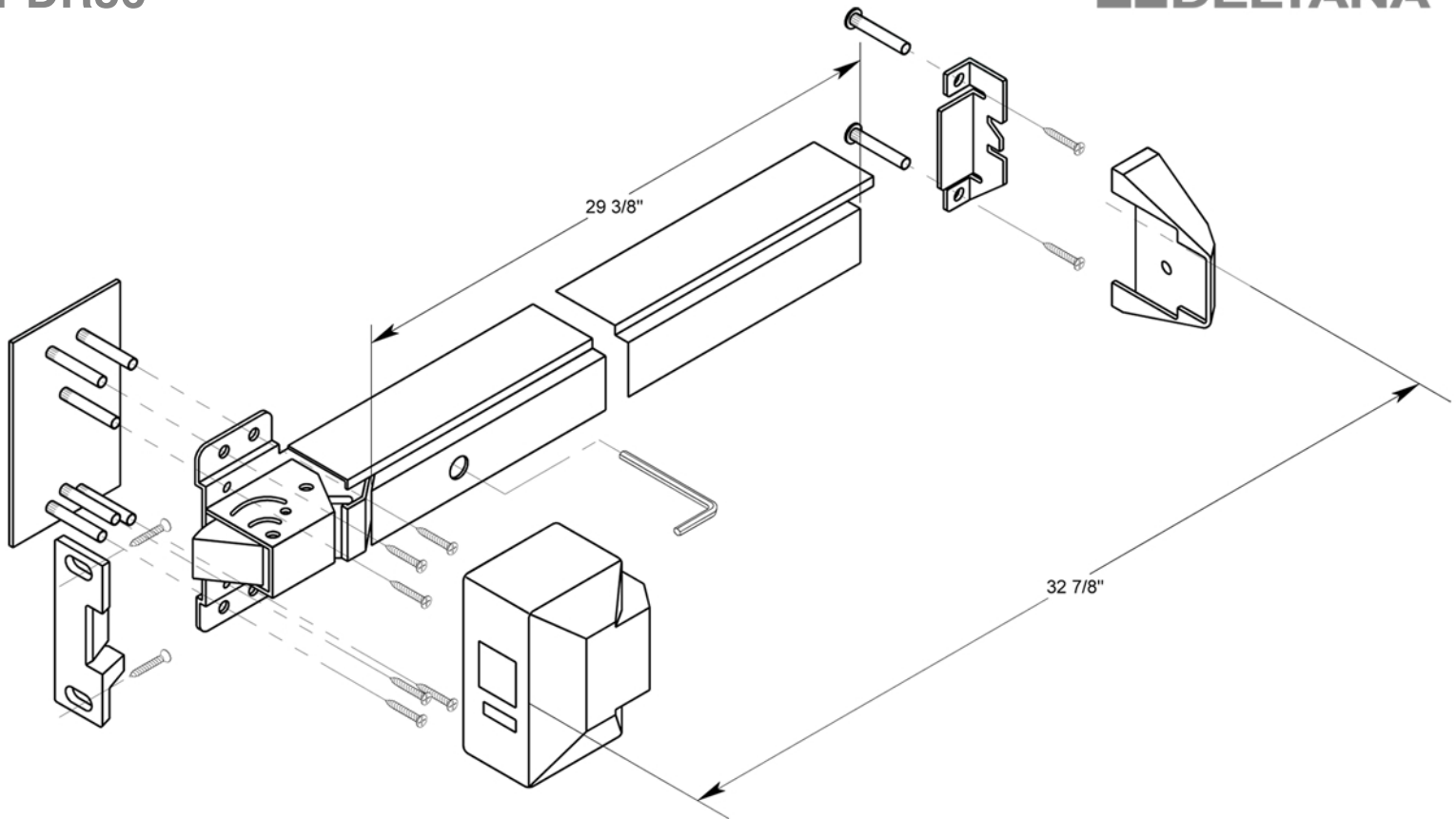
PDR36 - PDR48 RIM EXIT DEVICE - REVERSIBLE INSTALLATION INSTRUCTIONS

LHR door shown, RHR door opposite



Dogging : Depress push bar. Insert dogging wrench and turn 90°. The push bar will remain depressed and the latch will remain retracted.





Material: Push bar of aluminum extruded, steel pressed or stainless steel pressed and spring of stainless steel.
Latch bolt: 3/4" throw, stainless steel.
Dead latch bolt: 5/8" stainless steel.
Strike: For 5/8" stop, plus shim for 1/2" stop
Projection: 2 1/2" maximum, 1 7/8" pressed.
Reversible: Non-handed, reversible for all functions and trims.
For door: 1 3/4" thick standard. Specify if other than 1 3/4".
Dogging: 1/4 turn, hex key dogging.

Backset: 2 3/4"
Door width: 3" standard for doors width of 2'-6" to 3'-0", 4" standard for door width of 3'-0" to 4'-0".
Mounting height: 40 5/16" from CL to finished floor recommended.
Mounting: Furnished standard with sheet metal & machine screws or SNB as option.
Cylinders: For trim, knob, lever & thumb-press type, Schlage C" key way.
Operation: Inside by slight pressure on any point on the push bar at all time.
Models: Rim tipe & vertical rod available.