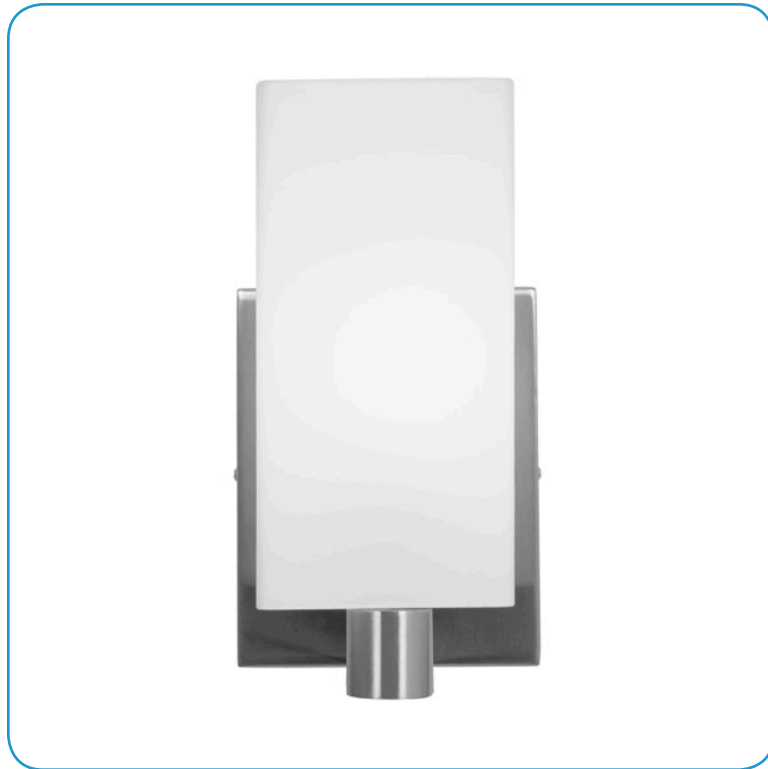


Model No :: **50175LEDDL-BS/OPL**
 Name :: Archi



Project Name :: _____
 Location :: _____
 Type :: _____
 Quantity :: _____
 Notes :: _____

Product Information	
Product ID ::	50175
UPC Code ::	641594216035
Mounting Type ::	Wall
Finish ::	Brushed Steel (BS)
Diffuser ::	Opal (OPL)

See Page 2 for Custom Product Options

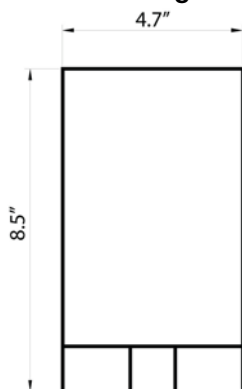
Product Dimensions		
Fixture		Canopy
Length ::	N/A	Length :: 5.9"
Width ::	4.7"	Width :: 4.75"
Diameter ::	N/A	Diameter :: N/A
Extension ::	5.51"	Height :: 0.9"
Height ::	8.5"	
Overall Height ::	N/A	



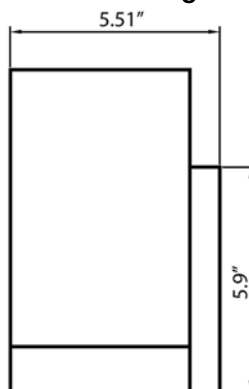
Technical Specifications

Qualifications	Specifications	Voltage	Recommended Dimmers
Location Rating :: Wall	Frame Material :: Metal	Voltage :: 120v	(ELV) LUTRON Skylark SELV-300P; (MLV) COOPER Aspire 9530SW; (TRIAC) LEGRAND Titan CD703-PW
Certification :: cETLus	Diffuser Material :: Glass		
IES File :: No	Lamping Type :: N/A	Photometrics	
Title 24 :: Yes	Lamping Base :: E-26	CCT :: 3000K	
Energy Star :: Yes	Lamp Quantity :: 1	CRI :: 90	
ADA Compliant :: No	Lamp Wattage :: 10 W	Wattage :: 10	
Marine Grade :: No	Total Wattage :: 10 W	Nominal Lumens :: 800	
Emergency Lighting :: No	Lamps Included :: Yes	Delivered Lumens :: N/A	
Warranty :: 3 Year Manufacture	J-Box Type :: Standard 4		

Line Drawing #1



Line Drawing #2



IES File

Image
Not Available

Toll Free 800-828-5483 or www.AccessLighting.com

14410 Myford Road, Irvine, CA 92606

The information provided is subject to change without notice. ©2018 Access Lighting Corporation. All Rights Reserved
 Rev. 4/6/2018 Filename:: 50175LEDDL-BS_OPL.pdf

