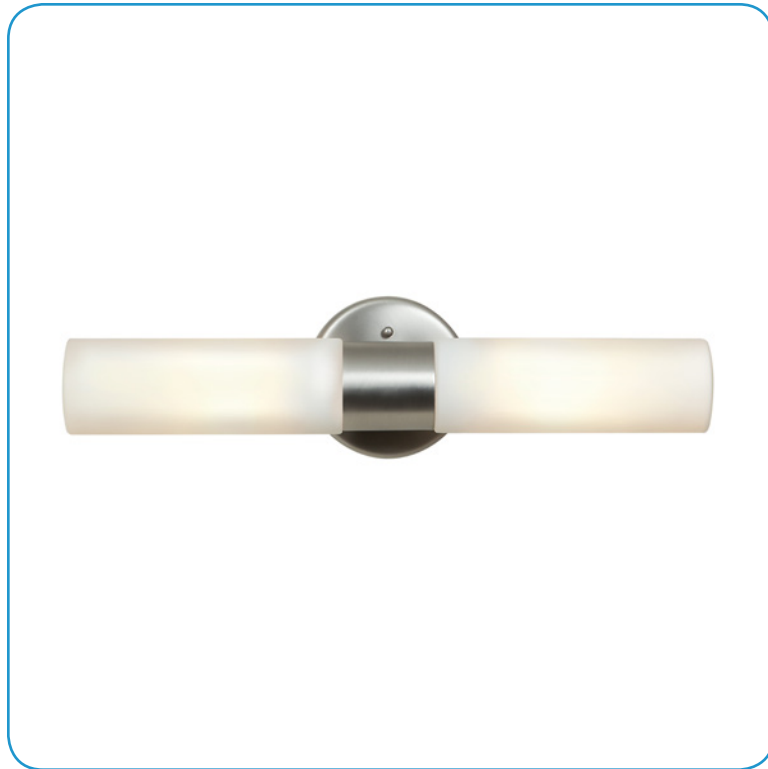


Model No :: **20361-ALU/OPL**
 Name :: EOS



Project Name :: _____
 Location :: _____
 Type :: _____
 Quantity :: _____
 Notes :: _____

Product Information	
Product ID ::	20361
UPC Code ::	641594192186
Mounting Type ::	Wall
Finish ::	Aluminum (ALU)
Diffuser ::	Opal (OPL)

See Page 2 for Custom Product Options

Product Dimensions			
Fixture		Canopy	
Length ::	N/A	Length ::	N/A
Width ::	N/A	Width ::	N/A
Diameter ::	3"	Diameter ::	N/A
Extension ::	4.5"	Height ::	0.5"
Height ::	18.5"		
Overall Height ::	N/A		



Technical Specifications

Qualifications	Specifications	Voltage	Recommended Dimmers
Location Rating :: Wall	Frame Material :: Aluminum	Voltage :: 120v	(TRIAC) Any Standard Dimmer
Certification :: cULus	Diffuser Material :: Glass	Photometrics	
IES File :: No	Lamping Type :: Halogen	CCT :: 2700K	
Title 24 :: No	Lamping Base :: E-26	CRI :: N/A	
Energy Star :: No	Lamp Quantity :: 2	Wattage :: 60	
ADA Compliant :: No	Lamp Wattage :: 60 W	Nominal Lumens :: 1600	
Marine Grade :: No	Total Wattage :: 120 W	Delivered Lumens :: N/A	
Emergency Lighting :: No	Lamps Included :: No		
Warranty :: 1 Year Manufacture	J-Box Type :: Standard 4		

Line Drawing #1	Line Drawing #2	IES File
	Image Not Available	Image Not Available

Toll Free 800-828-5483 or www.AccessLighting.com

14410 Myford Road, Irvine, CA 92606

The information provided is subject to change without notice. ©2018 Access Lighting Corporation. All Rights Reserved
 Rev. 4/6/2018 Filename: 20361-ALU_OPL.pdf

