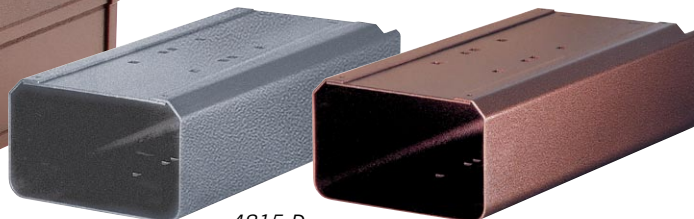


# Deluxe Rural Mailboxes

*Featuring an Elegant Textured Finish*



4850-D



4815-D



(2) #4850-D's on a 2-sided deluxe post (#4872) displayed.

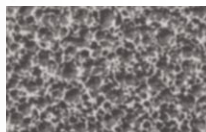
## DELUXE RURAL MAILBOXES U.S.P.S. APPROVED

Made entirely of aluminum, Salsbury U.S.P.S. approved 4800 series deluxe rural mailboxes feature a 1/8" thick extruded aluminum body and a 1/8" thick die cast aluminum front door and rear cover. Deluxe rural mailboxes also feature a durable textured powder coated finish available in two (2) colors and include an adjustable burgundy signal flag and a magnetic door catch. A full width stainless steel hinge attaches the die cast door to the body allowing for smooth operation. Deluxe rural mailboxes and optional matching deluxe newspaper holders can be mounted on standard, classic, decorative or deluxe mailbox posts, spreaders or a base of your choice. Deluxe rural mailboxes are approved for U.S.P.S. curbside mail delivery.

- 4850-D<sup>1</sup> Deluxe Rural Mailbox
- 7-1/2" W x 9-1/2" H x 20-1/2" D
  - 15 lbs.
  - \$100.00

- 4815-D<sup>1</sup> Deluxe Newspaper Holder
- 7-1/4" W x 4-1/2" H x 16" D
  - 10 lbs.
  - \$100.00

<sup>1</sup> Specify



Pewter



Mocha

