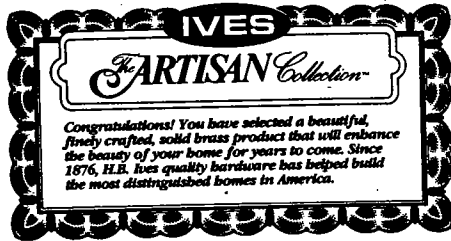
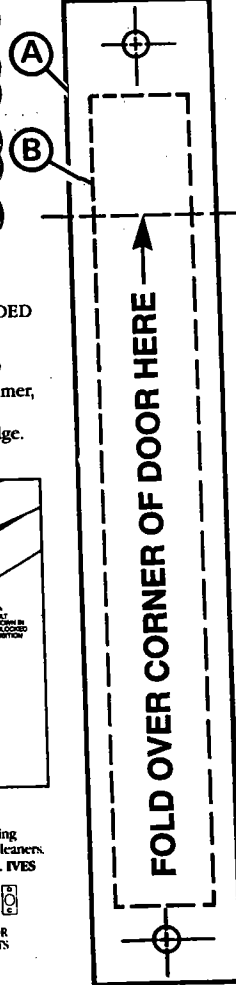


261 FLUSH BOLT



TEMPLATE



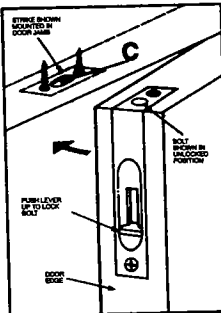
FLUSH BOLT

FOR USE ON WOODEN DOUBLE DOORS FOR ADDED SECURITY.

INSTALLATION INSTRUCTIONS

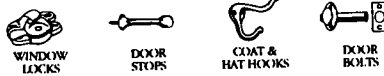
TOOLS REQUIRED: Drill, 3/8" and 3/32" drill bits, hammer, small chisel and Phillips screwdriver.

1. Position template on top or bottom center of door edge.
2. Outline and mortise (A) 1/16" deep.
3. Using template, mark screw holes, outline section B, mortise 3/4" deep, and secure bolt.
4. Rub chalk on end of bolt, close door and push lever up to mark strike hole position.
5. Outline strike plate, mortise area 1/16" deep, drill strike hole (C) 1" deep with 3/8" bit, align strike and secure.



MAINTENANCE INSTRUCTIONS

H.B. Ives Solid Brass products have a clear, protective lacquer coating which helps prevent discoloration. Do not use abrasive waxes or cleaners. ASK FOR OTHER FINE DECORATIVE HARDWARE BY H.B. IVES



FLUSH BOLT C261 B3 BRT

MADE IN U.S.A.