

Tienna Lever Installation Instructions



1. MARK DOOR

Latch hole Chassis hole



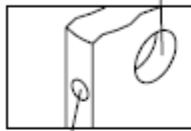
Backset

Start approximately 36" (915mm) from floor, fold and apply template to the edge of door bevel and mark center point on door edge as indicated on template. Mark center point on door face through guide on template.

NOTE: Backset on door face must be same as backset of lock.

2. BORE TWO HOLES

2-1/8" (54mm) hole



1" (25mm) hole

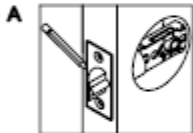
The hole should be at least 3-5/8" (92mm) deep.

Set the center hole according to the length of latch and the backset of template.

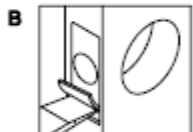
A. Bore a 2-1/8" (54mm) hole in center of door face for chassis. (It is recommended to bore hole from both sides of door to avoid splintering.)

B. Bore a 1" (25mm) hole in center of door edge for latch.

3. INSTALL LATCH



A. Insert latch into hole, keeping it parallel to the face of door. Mark outline of latch face and remove latch.

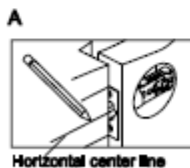


B. Chisel 1/8" (3mm) deep or until latch face is flush with door edge.



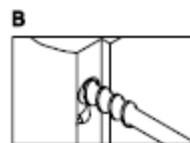
C. Insert latch and fasten screws.
NOTE: Latchbolt bevel must face to closing direction.

4. INSTALL STRIKE



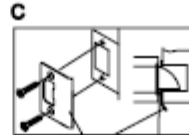
Horizontal center line

- A. (1) Close door until latchbolt touches door jamb. Along latch face to mark horizontal center line.
- (2) Measure one half of door thickness from one half of door jamb and mark vertical center line.
- (3) Extend horizontal center line and vertical center line to mark drill center point for strike.



B. Bore a 1" (25mm) hole, 1/2" (13mm) deep in door jamb at center point for strike.

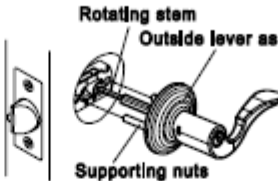
NOTE: To assure proper lockset function hole in jamb must be drilled at least 1/2" (13mm) deep.



C. Chisel door jamb 3/64" (1.2mm) deep for strike. Fit strike flush with door jamb and fasten screws.

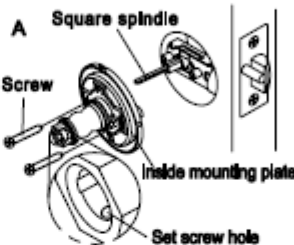
Strike Guardbolt

5. INSTALL OUTSIDE LEVER ASSEMBLY

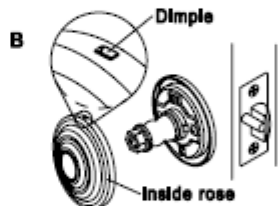


Insert outside lever assembly with the two supporting nuts and rotating stem through the holes of latch. Press flush with door face.

6. INSTALL INSIDE LEVER ASSEMBLY



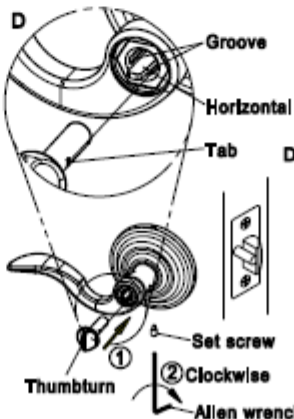
A. Install inside mounting plate on to the square spindle of the exterior assembly. Make sure the set screw hole from below, then push flush to the door. Install the 2 mounting screws through the horizontal holes and hand tighten.



B. Install interior rose on to the interior chassis by positioning dimple on top, then snap on bottom of rose, as shown in E.



C. Install the interior lever on to the interior chassis.



D. Insert the thumbturn on to the interior chassis. Then tighten set screw clockwise with Allen wrench.

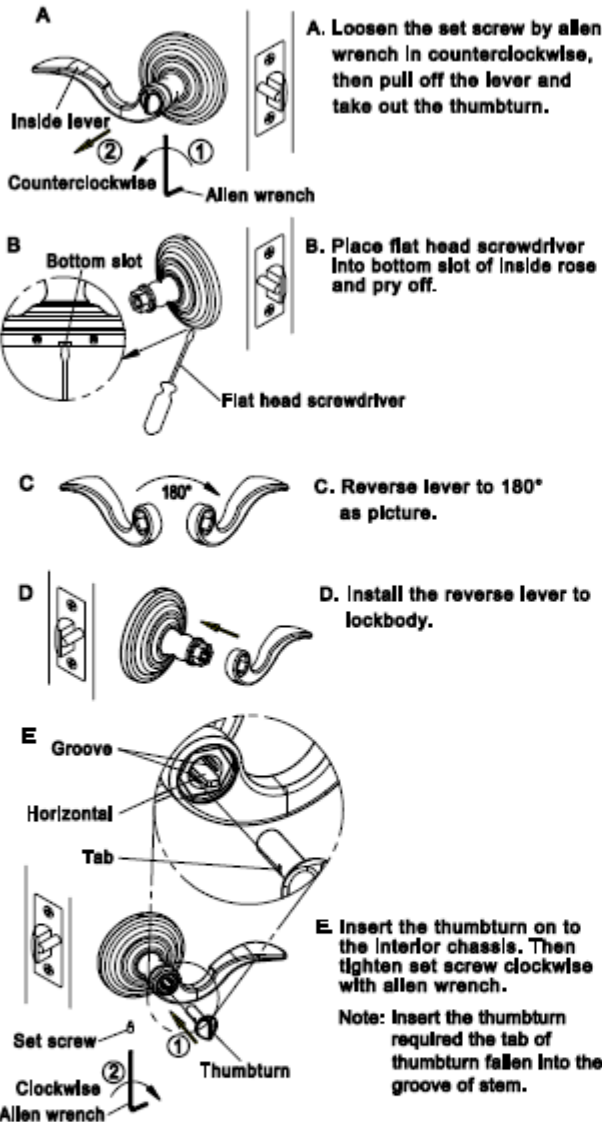
Note: Insert the thumbturn required the tab of thumbturn fallen into the groove of stem.

Tienna Lever Installation Instructions



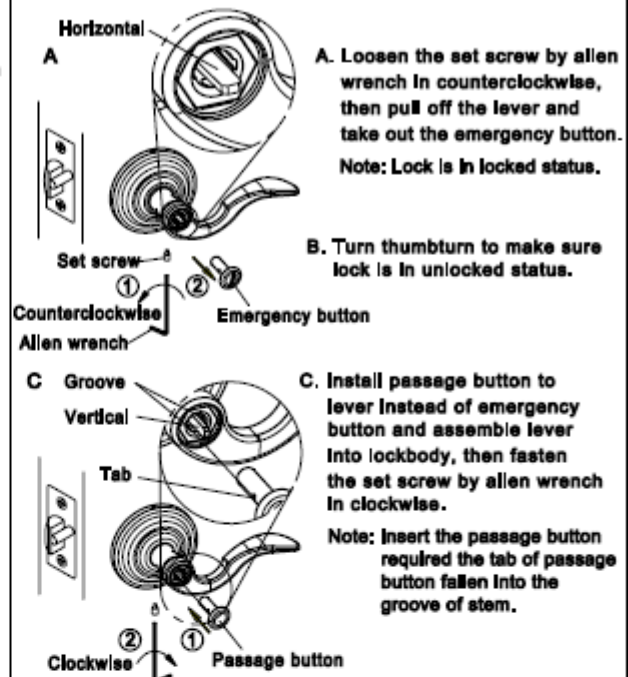
7. REVERSIBLE LEVER(FOR INSIDE LEVER OF ENTRY FUNCTION, AND BOTH SIDES LEVERS OF PASSAGE/PRIVACY FUNCTION)

FOR INSIDE LEVER OF ENTRY FUNCTION

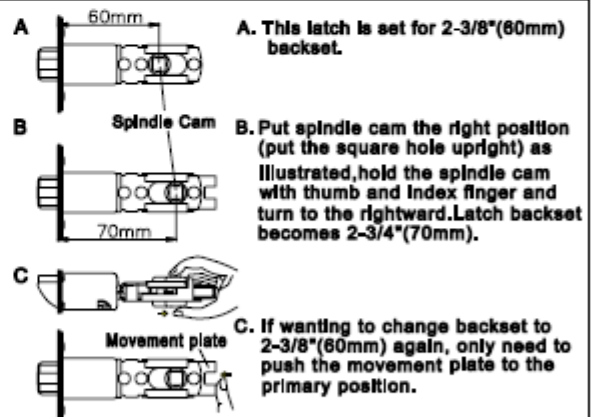


8. CONVERT PRIVACY FUNCTION TO PASSAGE FUNCTION

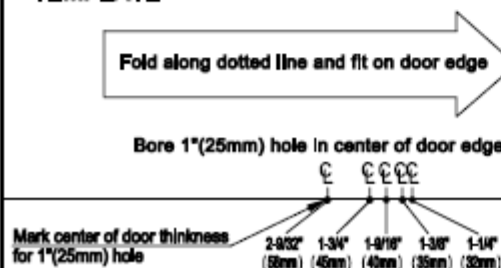
NOTE: Convert Inside assembly as following also.



ADJUST BACKSET FROM 60mm TO 70mm



TEMPLATE



Select desired backset, 2-3/8"(60mm) or 2-3/4"(70mm).

