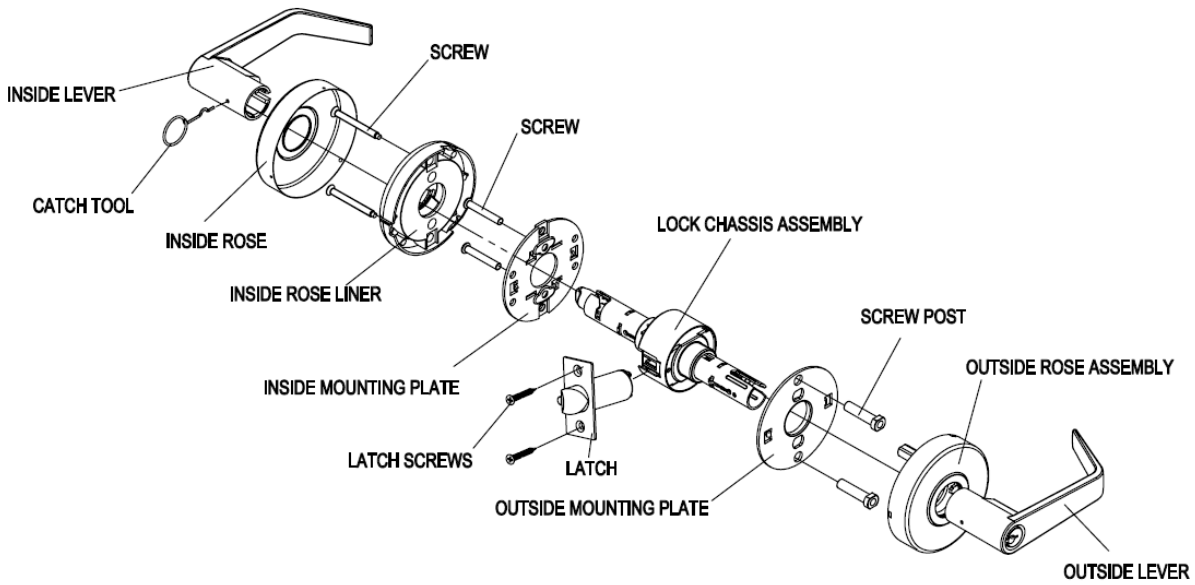
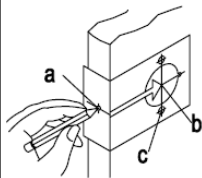


Bulldog Grade 2 Heavy Duty Lever Installation Instructions

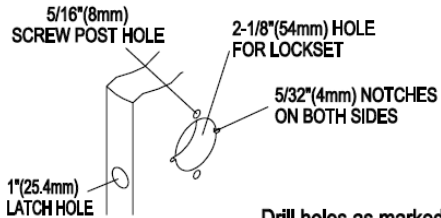


1. MARK DOOR



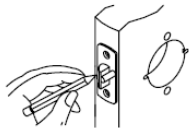
- Start 36"(915mm) from floor and mark center of door edge.
- Select backset 2-3/8"(60mm) or 2-3/4"(70mm) and mark hole center on door face.
Note: Backset on door face must be same as backset of lock.
- Mark two holes for screw post.

2. DRILL HOLES

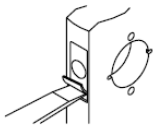


Drill holes as marked.
Note: Drill 2-1/8"(54mm) hole from both sides but to avoid wood split.

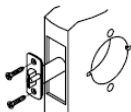
3. INSTALL LATCH



- Insert latch in hole and keep it parallel to door face. Outline faceplate and remove latch.

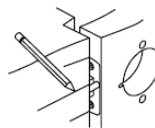


- Chisel 9/64"(3.5mm) depth so that faceplate is flush with door edge.

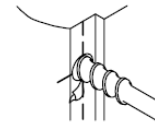


- Insert latch and tighten screws.
Note: Latchbolt bevel must face to closing direction.

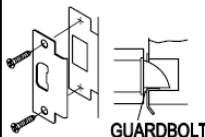
4. INSTALL STRIKE



- Close door to mark horizontal center line of strike.



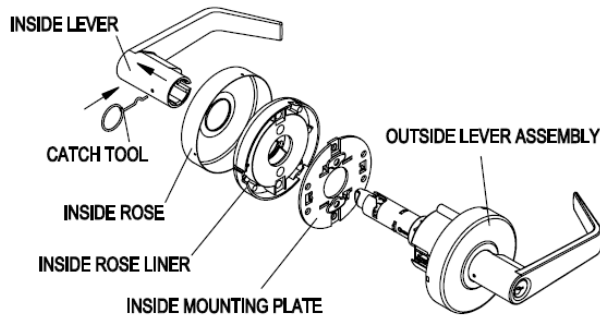
- Measure one half of door thickness from door frame to mark vertical center line of strike. Drill 1"(25.4mm) hole, 1/2"(12.7mm) deep at intersection of horizontal and vertical center lines.



- Cut out jamb 3/32"(2.4mm) depth to strike with jamb. Tighten screws.
Note: For entry function, guardbolt must ram against strike as illustrated, preventing force from door closed.

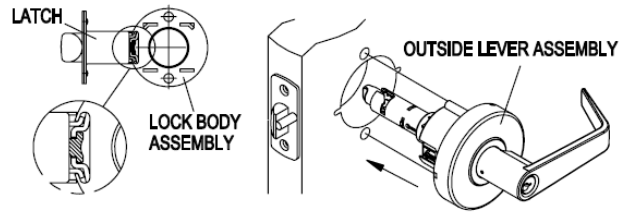
Bulldog Grade 2 Heavy Duty Lever Installation Instructions

5. REMOVE INSIDE TRIM



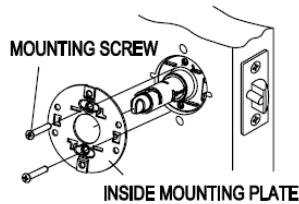
A lever catch is a hole in the rear of inside lever shank. Depress catch tool onto lever catch to slide off inside lever, rose, rose liner and mounting plate.

6. INSTALL OUTSIDE LEVER ASSEMBLY

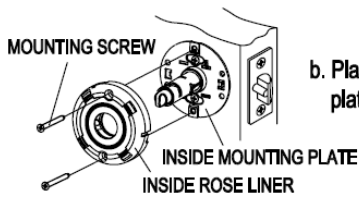


Install outside lever assembly on door. Make sure latch engaged with retractor correctly as illustrated above-left.

7. INSTALL INSIDE MOUNTING PLATE AND ROSE LINER

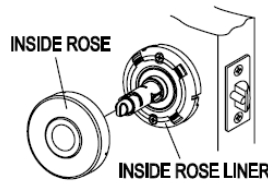


a. Place mounting plate on door face and hold outside lever slightly and tighten screws.

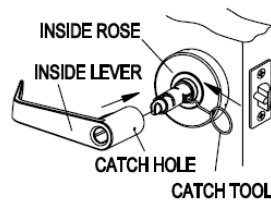


b. Place inside rose liner on mounting plate and tighten screws.

8. INSTALL INSIDE ROSE AND LEVER

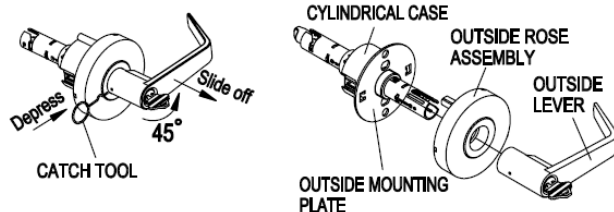


a. Press rose onto rose liner. Be sure to fit rose in recess on rose liner.

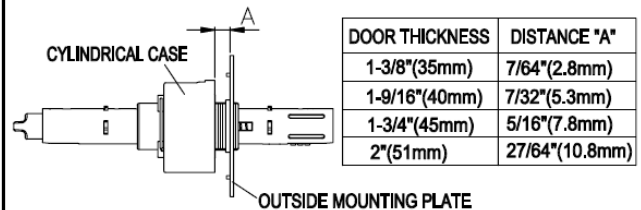


b. Depress catch tool onto lever catch and push inside lever all the way to click into catch hole.

9. ADJUST PER DOOR THICKNESS



a. Insert key and turn it 45° to the right (or left);
 b. A lever catch is a hole in the rear of outside lever shank. Depress catch tool onto lever catch to disassemble outside lever and outside rose assembly. (Note: lock must be in open status when disassemble)



c. To fit different door thickness, rotate outside mounting plate to adjust distance "A" (Distance "A" is distance from outside mounting plate to cylindrical case) as above.